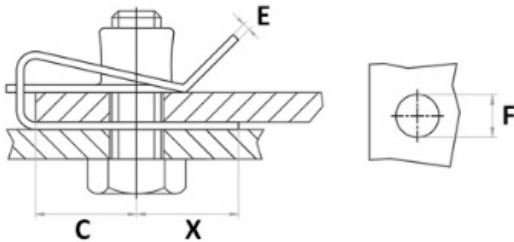


M5 Chimney Nuts

CN2

| | |
|---------------------------|--|
| • Description: | Ideal fasteners for heavy duty applications, ensuring a strong and reliable joint in sheet materials – metal or plastic. |
| • Finish: | Spring steel |
| • Nut size: | M5 |
| • Plate size: | 19.9 x 14mm ± 0.2mm |
| • Panel Thickness: | 0.6mm (±0.05mm) |
| • Finish/Colour: | Zinc Plated |



| Panel Range | Length (mm) | Width (mm) | C | E | F | X |
|-------------|-------------|------------|------|-----|-----|-----|
| 0.5 - 4 | 19.9 | 14 | 10.2 | 0.6 | 7.5 | 8.5 |